

Northern Valley Wind Project



2150-745 THURLOW STREET, VANCOUVER, BC, V6E 0C5 604.648.6630 ELEMENTALENERGY.CA

February 1st, 2023

Sent via mail

RE: Northern Valley Wind Power Project – Project Notification

Dear Sir/Madam,

You are receiving this letter because you are within the 1,500 m notification zone of the proposed Northern Valley Wind Power Project (the “Project”). The Project will consist of approximately 15 total turbines split across two distinct areas: one further to the north (approximately 4 turbines) and one to the south (approximately 11 turbines). Please see the attached map to review the potential turbine siting areas.

The Project is being developed by Northern Valley Wind GP Inc., a project entity owned by Elemental Energy Renewables Inc. (“Elemental”). Elemental is a 100% Canadian owned and operated company, headquartered in Vancouver. Elemental owns, operates or is developing over 1,000 megawatts of renewable projects across North America. Elemental’s portfolio includes four operational solar projects in Alberta, and three operating wind projects in eastern Canada. Elemental is a Certified B Corporation, which means they meet the highest verified standards of social and environmental performance, transparency, and accountability. To learn more about Elemental, check out our website at: www.elementalenergy.ca.

The proposed Project will be exclusively located on privately owned farmland and will be located in the counties of Two Hills, St. Paul and Vermillion River. Each turbine will have a tower height of around 120 meters high, a nacelle (generator) of about 6 MW each and three blades, each measuring approximately 80 meters in length.

Environmental studies have been initiated within the turbine siting areas and a comprehensive report has been filed with the Alberta Environment and Parks (AEP). A meteorological testing tower will be erected to evaluate the wind speeds in the area; a key step in ascertaining if the Project can be commercially viable. The location of the meteorological tower is shown in the attached map.

The Project is being proposed to connect to the local distribution grid which has extensive three phase power lines in the area. The connections are being assessed with ATCO electric and no major upgrades to the local power grid is expected as a result of the proposed Project.

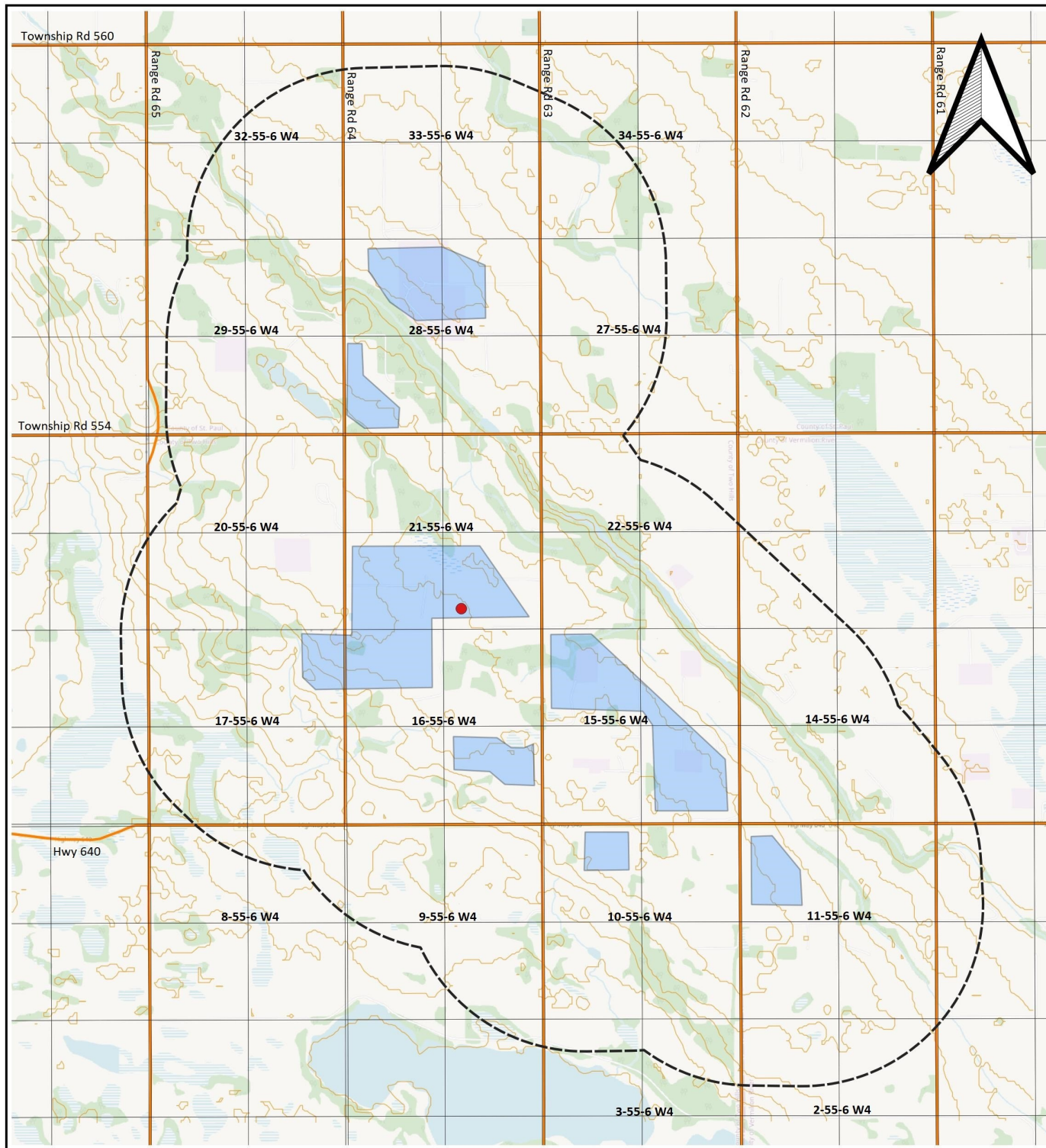
Once siting constraints are fully known, a preliminary layout will be prepared and shared with the public. We will also evaluate the noise and shadow impacts of the layout at local residences and ensure the layout is compliant with all provincial regulations. A formal open house will be held for the Project and an invite will be sent out to all stakeholders well in advance of the event, as well as a posted invite in the local newspaper.

Finally, consultation with county officials and local landowners has been initiated and will continue throughout 2023. If you have any questions or comments regarding Elemental Energy, the proposed Project, or wind energy in general, please contact us directly by emailing or calling Liam Wolfe at the contact details provided at the end of this letter.

Sincerely,

A handwritten signature in black ink, appearing to read 'Liam Wolfe', with a long horizontal stroke extending to the right.

Liam Wolfe
Development Manager, Elemental Energy
T: 403.700.3976
E: lwolfe@elementalenergy.ca

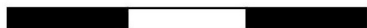


Prepared by Bright Diamond Consulting
January 31, 2023



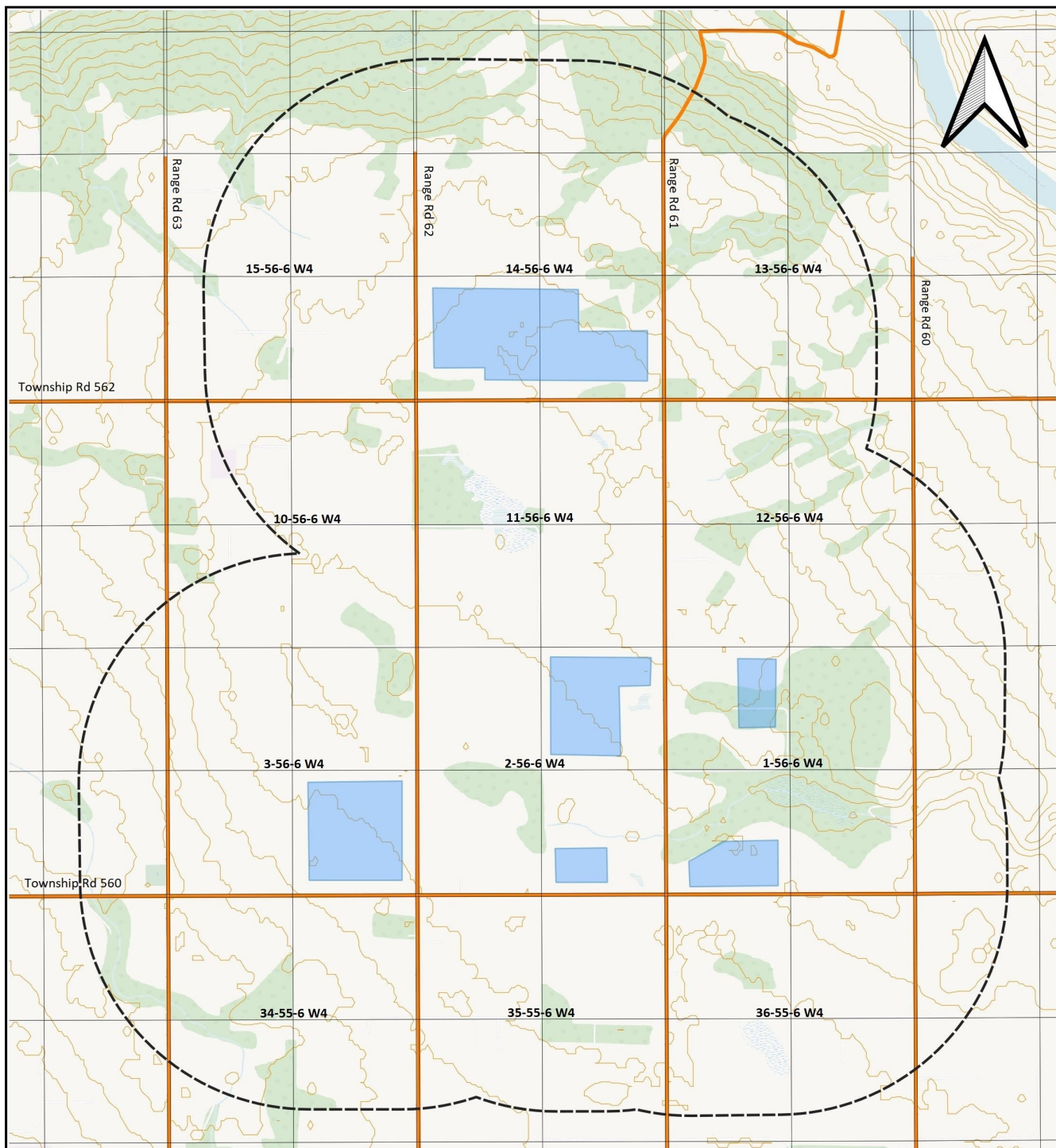
Northern Valley Wind Site - Consultation Map

0 750 1,500 2,250 m



Legend

- Proposed Wind Turbine Siting Area
- Notification Area (1500 m)
- Roads
- Project Meteorological Test Tower
- Parcel Boundary
- Elevation Contours (10m)



Prepared by bright Diamond Consulting
January 31, 2023



Northern Valley Wind Site - Consultation Map

Legend

- Proposed Wind Turbine Siting Area
- Notification Area (1500 m)
- Roads
- Elevation Contours (10m)
- Parcel Boundary

0 500 1,000 1,500 m

